



Report of the Cabinet Member for Child and Family Services

Scrutiny Performance Panel - Child and Family

18th December 2019

Monthly Performance Report – October 2019

Purpose	<ul style="list-style-type: none"> To present Child and Family Services monthly performance report for October 2019
Content	<ul style="list-style-type: none"> Appended is the monthly report which includes performance against Welsh Government and local indicators. The report includes performance at Child and Family Services front door – the Information, Advice and Assistance team, the Supported Care Planning teams, including Child Disability, the Looked After Childrens team, Bays 16+ and Fostering Services. The report also includes performance around personal and case supervision and for the first time, the signs of safety metrics.
Councillors are being asked to	<ul style="list-style-type: none"> Scrutiny Performance Panel are asked to consider the report as part of their routine review of performance in Child and Family Services.
Lead Councillor(s)	Cllr Elliott King, Cabinet Member for Children’s Services
Lead Officer(s)	David Howes, Director of Social Services Julie Thomas, Head of Child and Family Services
Report Author	Julie Thomas, Head of Child and Family Services 01792 633812 Julie.thomas5@swansea.gov.uk

Child & Family Services

Performance Report

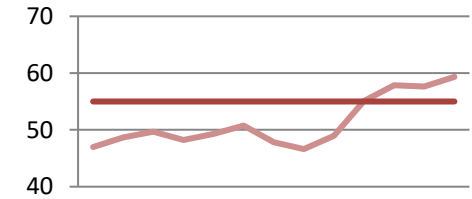
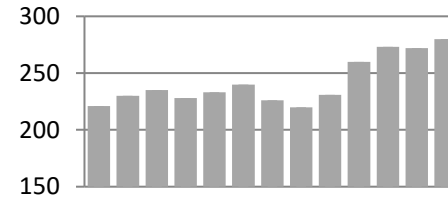
V2

October 2019



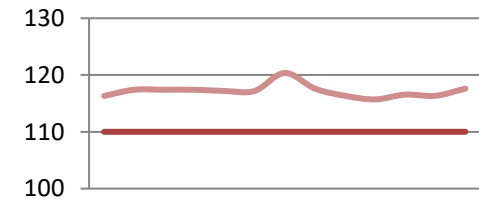
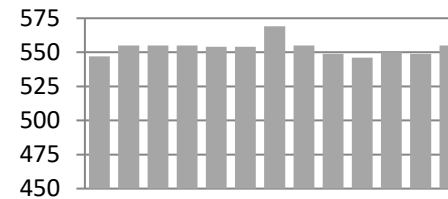
Child Protection

There are **280** (272) children on the children protection register. This is an **increase of 8** from last month giving us a rate of **59** Per 10,000.



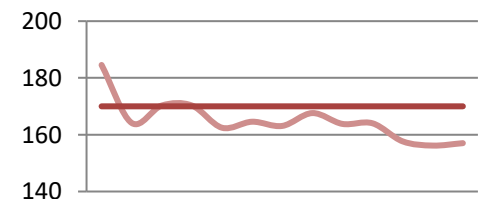
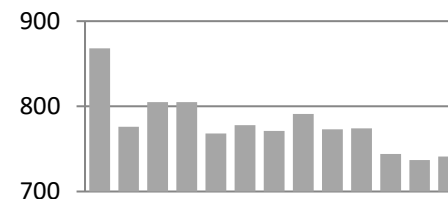
Looked After Children

There are **555** (549) children looked after. This is an **increase of 6** from last month giving us a rate of **118** Per 10,000.



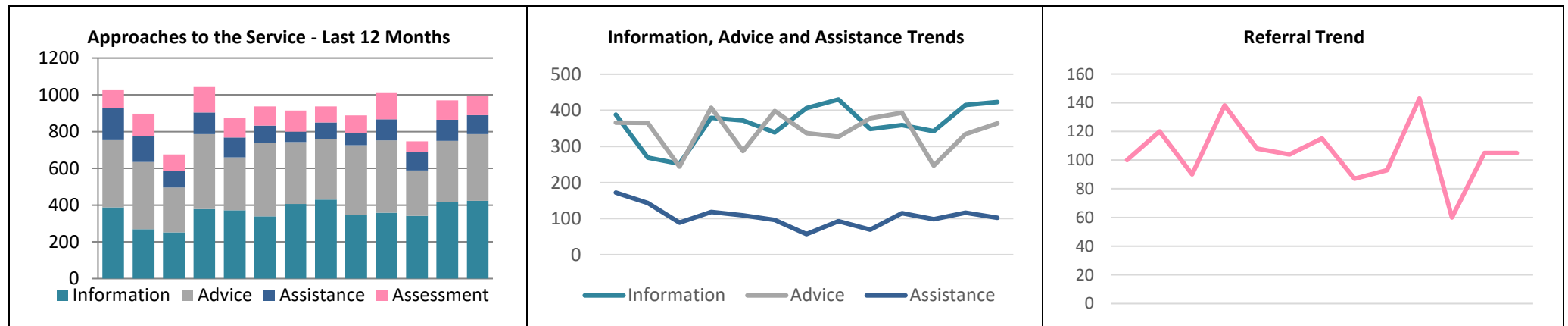
Children in Need of Care and Support

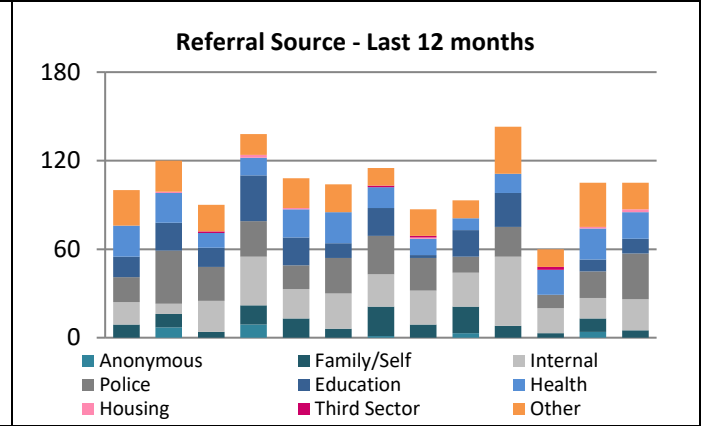
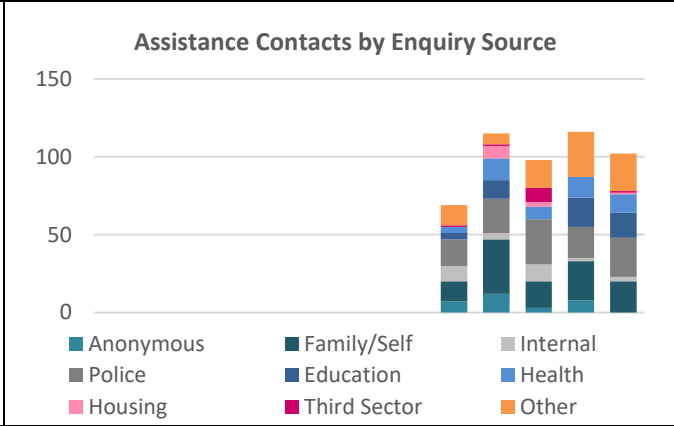
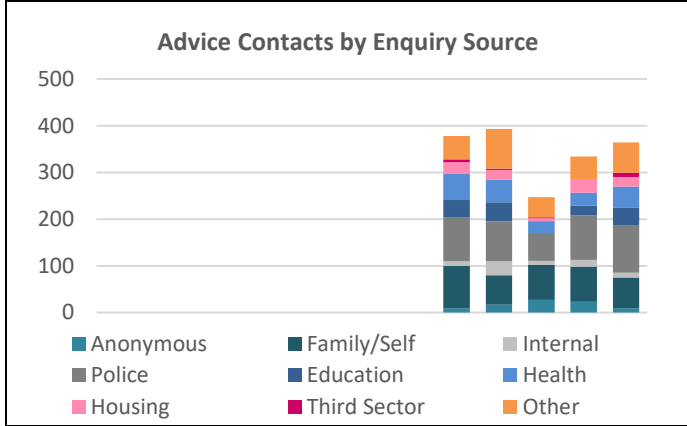
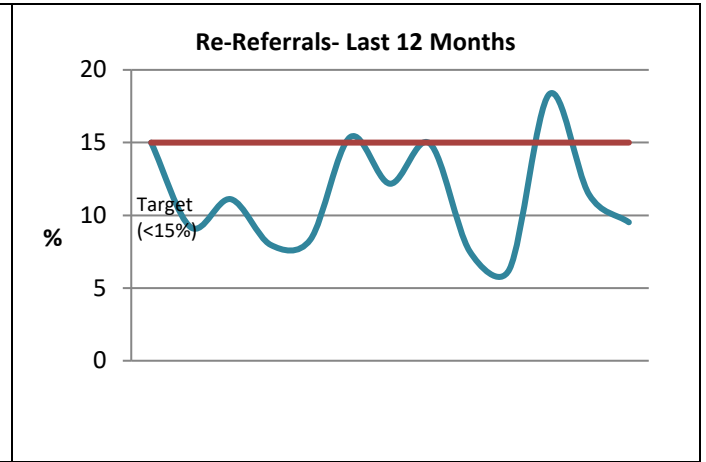
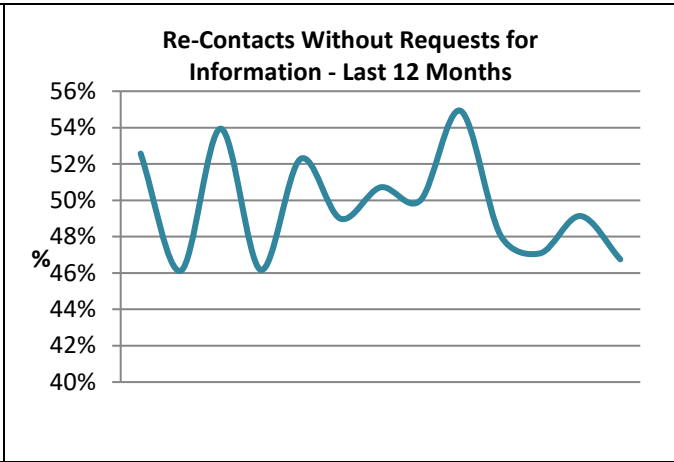
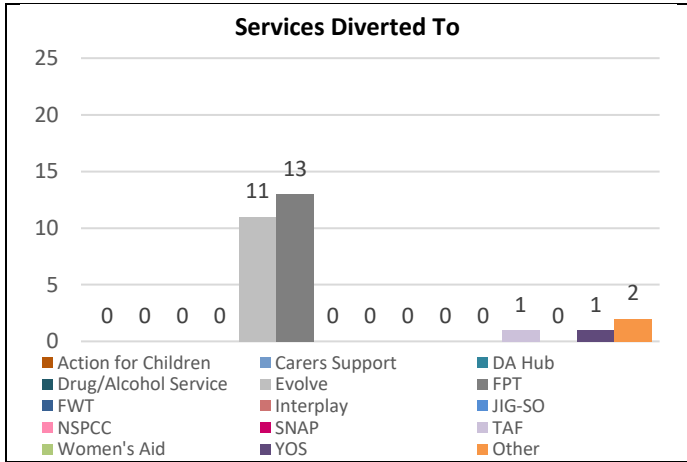
There are **741** (737) children in need of care and support. This is an **increase of 4** from last month giving us a rate of **157** Per 10,000.



Wellbeing

Measure / Metric	Result	Target	What's Good?	Status
The number of contacts received by the service – instances of Information, Advice, Assistance or Assessment :	994 (970)		Low is Good	
The percentage of these contacts that were helped by providing information only:	423, 42.56% (415, 42.78%)		High is Good	
The percentage of these contacts that were helped by providing advice only:	364, 36.62% (334, 34.43%)			
The percentage of these contacts that were helped by providing assistance only:	102, 10.26% (116, 11.96%)			
The percentage of these contacts that were passed on for formal assessment :	105, 10.56% (105, 10.82%)	10%	Low is Good	
The percentage of these contacts that were diverted to other services :	28, 2.82% (48, 4.95%)		High is Good	
The number of repeat contacts helped by providing information, advice or assistance in the month, but excluding requests for information (where there has been a contact within the last 12 months):	367, 46.75% (369, 49.13%)			
The number of repeat referrals in the month (where a referral is received within 12 months of a previous referral):	10, 9.52% (12, 11.43%)	Less than 15%	Low is Good	





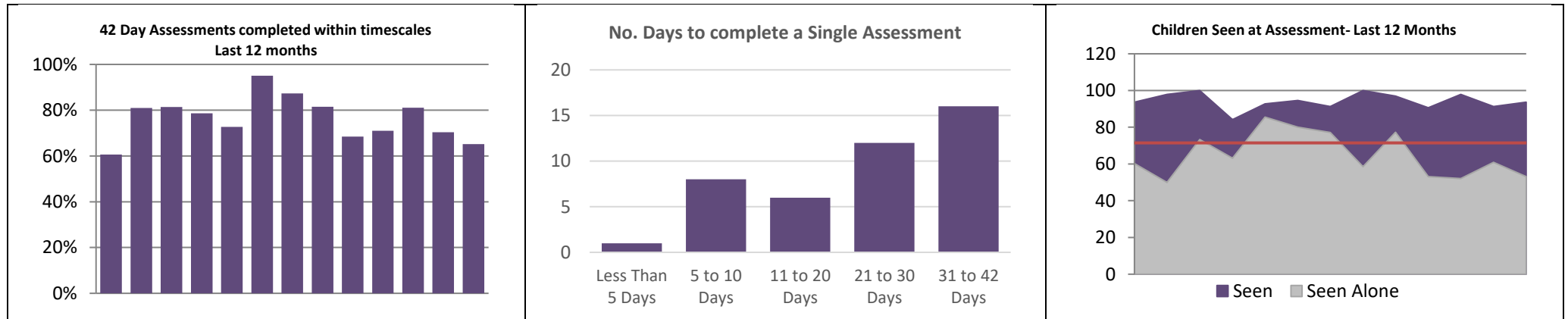
What is working well?

What are we worried about?

What do we need to do?

Supported Care Planning - Assessments

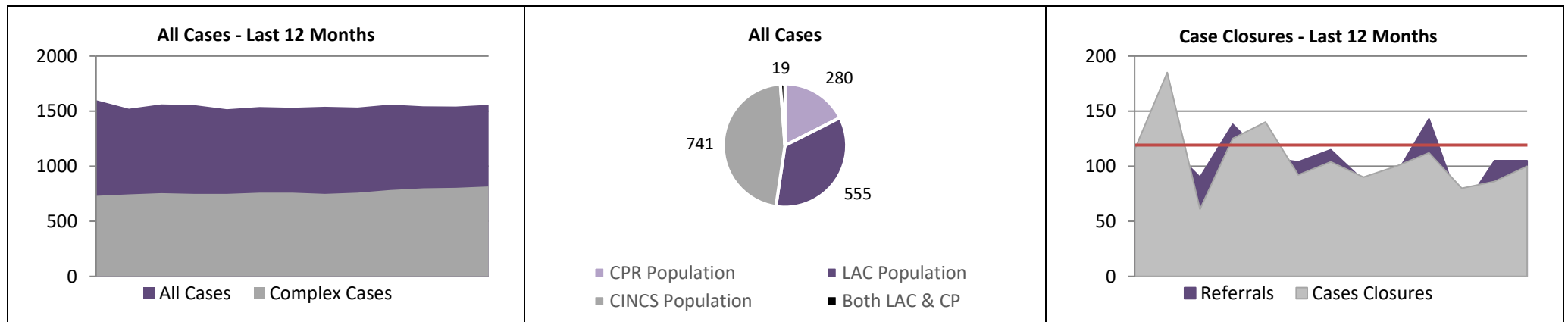
Measure / Metric	Result	Target	What's Good?	Status
Number of 42 day Assessments Carried out during the month:	66 (71)		Lower is Better	
The percentage of 42 day assessments carried out within timescales :	43, 65.15% (50, 70.42%)	90%	High is Good	
The percentage of Assessments where there is evidence the child has been seen by a qualified worker :	44, 93.62% (42, 91.30%)	More than 90%	High is Good	
The percentage of Assessments where there is evidence the child has been seen alone by a qualified worker :	25, 53.19% (28, 60.87%)	More than 65%	High is Good	



What is working well?	What are we worried about?	What do we need to do?

Supported Care Planning – Planning, Reviews and Caseloads

Measure / Metric	Result	Target	What's Good?	Status
Number of Cases of Children needing Care and Support Managed by the Service at the end of the month:	1557 (1540)	1600	Lower is Better	
Of these, the percentage that represent complex cases (LAC, CP):	816, 52.41% (803, 52.14%)	65%	Higher is Better	
The number of cases closed to Child and Family Services during the month:	100 (86)		Higher is Better	
The percentage of reviews of Children in Need of Care and Support held during the month within prescribed timescales:			High is Good	
The percentage of CINCS allocated to a qualified worker at the end of the month:	591, 79.76% (581, 78.83%)		High is Good	



What is working well?	What are we worried about?	What do we need to do?

Supported Care Planning – Children with a Disability

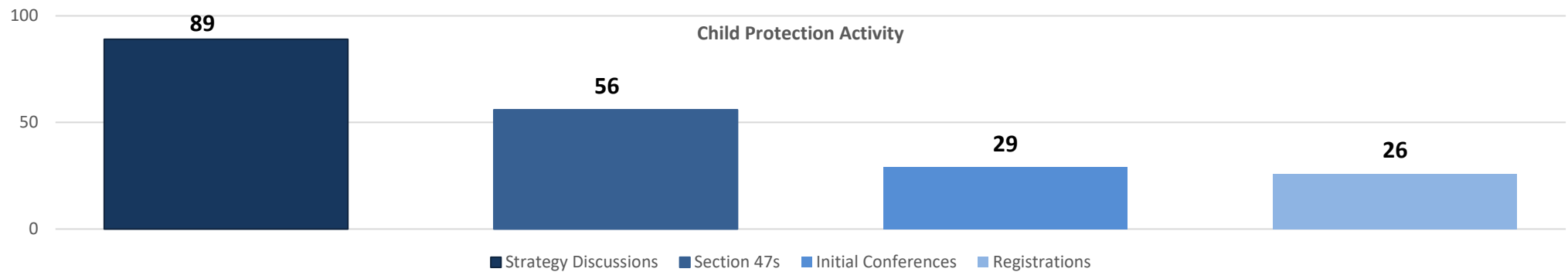
Measure / Metric	Result	Target	What's Good?	Status
The number of disabled children referred to the Child Disability Team during the month:	8 (10)		Range	
The total number of disabled children with a Care and Support Plan at the end of the Month:			Range	
The number of disabled children provided with Direct Payments at the end of the month:			Range	
The number of disabled children transitioning to the Care of Adult Services during the month:			Baseline	
The number of disabled children provided with respite care at the end of the Month:			Range	



What is working well?	What are we worried about?	What do we need to do?

Safeguarding – Child Protection Activity

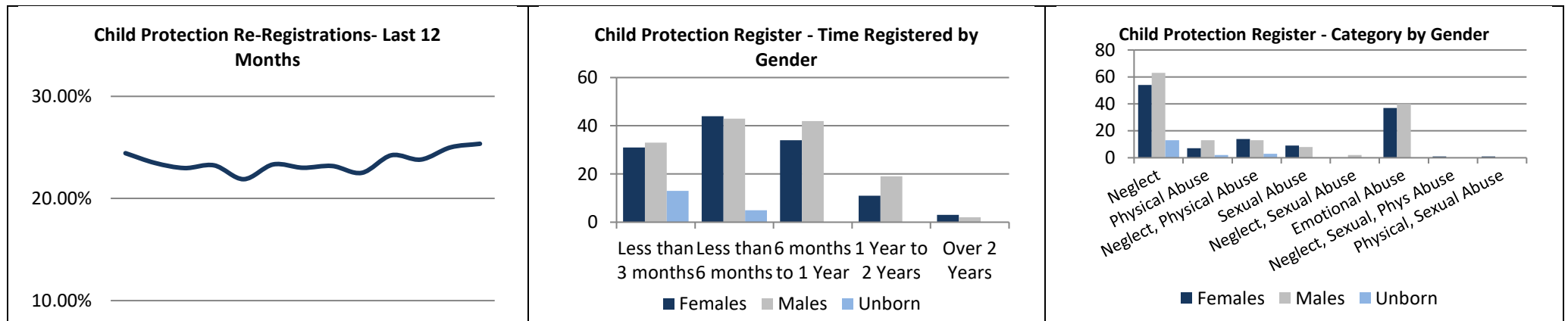
Measure / Metric	Result	Target	What's Good?	Status
The total number of children added to the Child Protection Register in the month.	26 (22)		Low is Good	
The total number of children removed from the Child Protection Register in the month.	18 (23)		Higher is Better	
The Percentage of Initial Conferences held in timescales during the month.	29, 100% (19, 100%)	100%	High is Good	
The percentage of Initial Core Group Meetings held within timescales during the month.	15, 75.00% (23, 95.83%)	90%	High is Good	
The percentage of visits to children on the Child Protection Register that were on time or not overdue.	229, 87.07% (236, 90.42%)	90%	High is Good	



What is working well?	What are we worried about?	What do we need to do?

Safeguarding – Reviews and Allocations

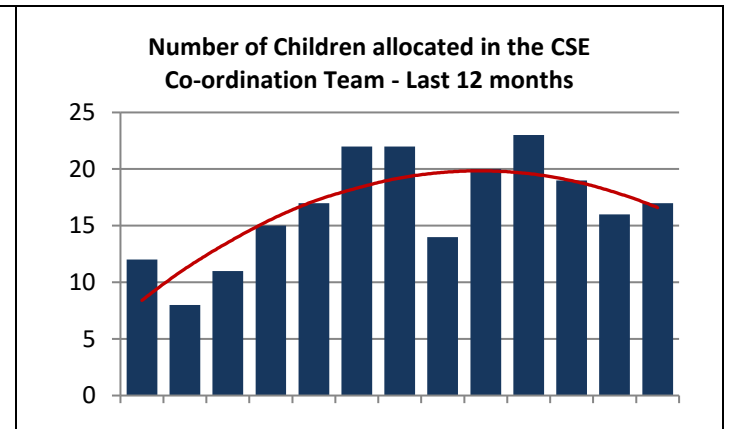
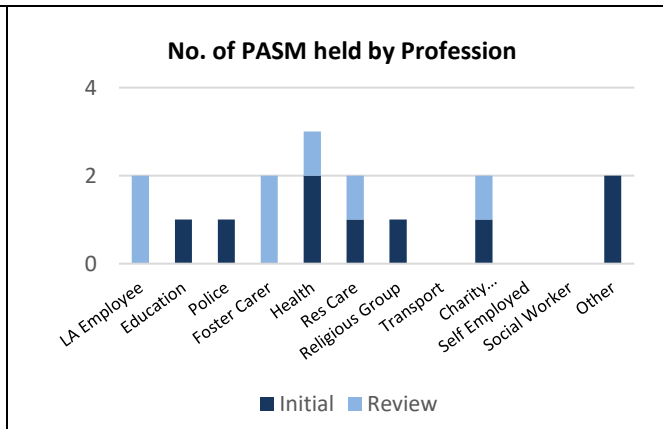
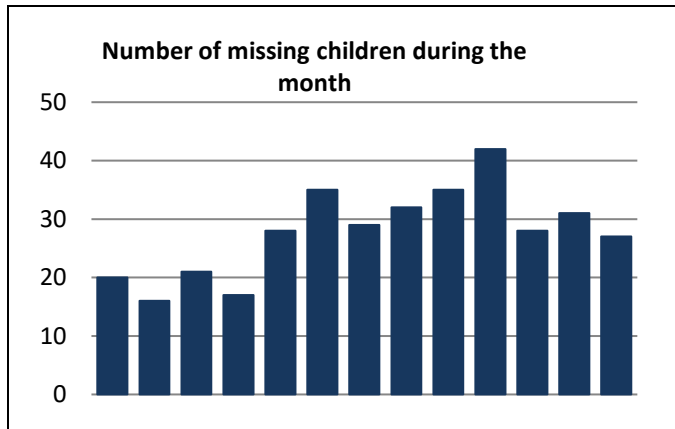
Measure / Metric	Result	Target	What's Good?	Status
The percentage of children on the Child Protection Register that have been registered previously .	71, 25.36% <i>(68, 25.00%)</i>	Less than 20%	Low is Good	
The length of time on the Child Protection Register for those children removed during the month.	231 days <i>(221 days)</i>	Range of 100-300	180-270 is Optimal	
The percentage of Review Conferences held on time during the month.	70, 100% <i>(84, 100%)</i>	100%	High is Good	
The percentage of children de-registered in the month who were de-registered at the first review :	1, 5.56% <i>(8, 34.78%)</i>	< 15%		
The percentage of children on the Child Protection Register Allocated to a qualified worker at the end of the month.	280, 100% <i>(263, 96.69%)</i>	100%	High is Good	



What is working well?	What are we worried about?	What do we need to do?

Safeguarding – CSE, Missing Children and Professional Abuse

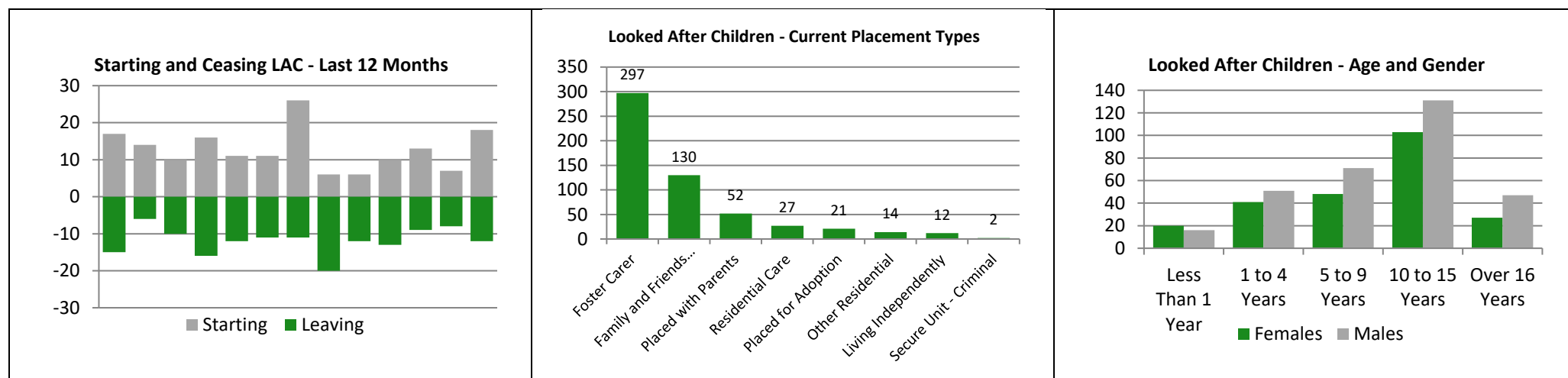
Measure / Metric	Result	Target	What's Good?	Status
The number of children allocated in the CSE Co-ordination Team at the end of the month:	17 (16)	No Target Set	Lower is Better?	
The number of episodes of children going missing or absent without authority from home during the month:	43 (43)	No Target Set	Lower is Better	
The number of children that these episodes related to:	27 (31)	No Target Set	Lower is Better	
The number of Strategy Discussions held by the CSE Co-ordination Team during the month:	13 (14)	No Target Set		
The number of Professional Abuse Meetings held during the month:	10 (8)	No Target Set	Low is Good	



What is working well?	What are we worried about?	What do we need to do?

Permanence – Looked After Children

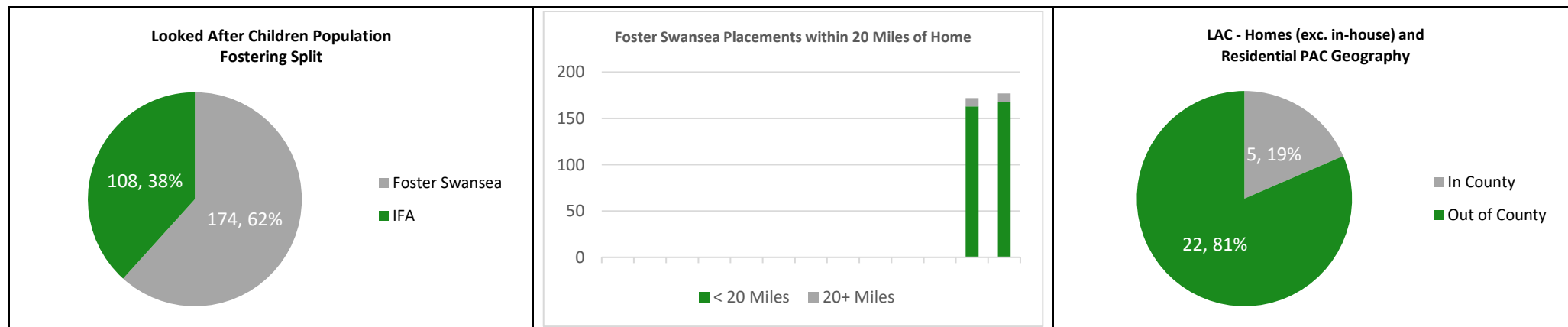
Measure / Metric	Result	Target	What's Good?	Status
The number of children becoming looked after during the month:	18 (7)	No Target Set	Low is Good	
The number of children ceasing to be looked after during the month:	12 (8)	No Target Set	Higher is Better	
The percentage of children becoming looked after during the month who had a completed Care and Support plan within 10 working days of becoming LAC:	18, 100% (7, 100%)	100%	High is Good	
The percentage of LAC Statutory Visits in the month that were completed or not overdue:	456, 87.02% (471, 91.63%)	90%	High is Good	
The percentage of Looked After Children allocated to a qualified Social Worker:	555, 100% (546, 99.45%)	100%	High is Good	



What is working well?	What are we worried about?	What do we need to do?

Permanence – Reviews and Placement Stability

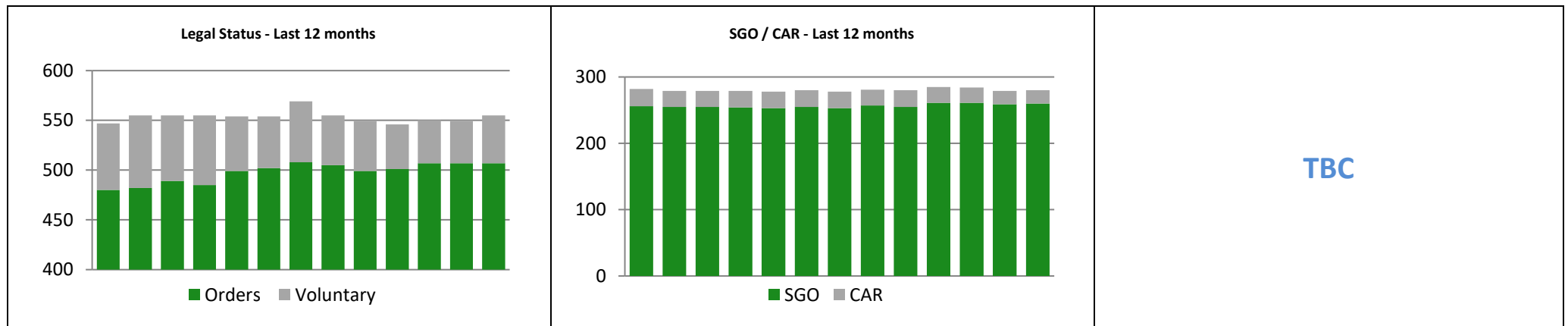
Measure / Metric	Result	Target	What's Good?	Status
The number of LAC Reviews Carried out during the month:	XX (136)	No Target Set	High is Good	
The number of LAC reviews that were completed within statutory timescales:	XX, XX% (136, 100%)	100%	High is Good	
The percentage of 4 month LAC reviews which had a plan for permanence:	XX, XX% (9, 100%)	100%	High is Good	
The percentage of PEP's received within 20 school days of becoming looked after:	XX, XX% (4, 57.14%)	100%	High is Good	
The percentage of looked after children who have had three or more placements in the previous 12 months of being looked after:	54, 9.73% (52, 9.47%)	Less Than 12%	Lower is Better	
The number of children/Young People residing in Bed and Breakfast at any time during the month:	0 (0)	Zero	Low is Good	



What is working well?	What are we worried about?	What do we need to do?

Permanence – Leaving Care

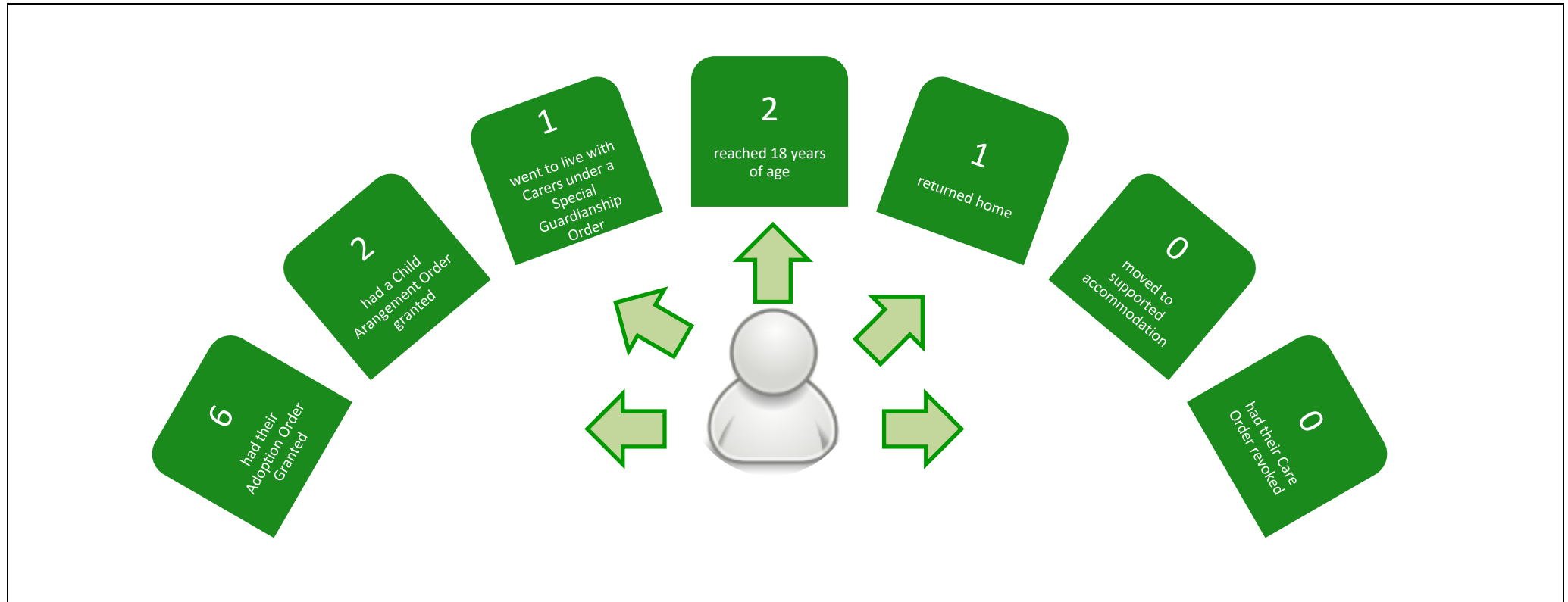
Measure / Metric	Result	Target	What's Good?	Status
The number of cases managed under Special Guardianship Orders and Child Arrangement Orders at the end of the month:	280 (279)	No Target Set	Range of 250-300	
The number/percentage of young people becoming category 2-4 during the month who have an up to date Pathway Plan:	2, 100% (2, 100%)	100%	High is Good	
The number/percentage of young people becoming category 2-4 during the month who have an allocated personal adviser:	2, 100% (2, 100%)	100%	High is Good	
The number of young people in category 2-4 at the end of the month who were in Education, Employment or Training 12 months after ceasing to be LAC:	2, 100% (2, 66.67%)	No Target Set	High is Good	
The number of young people presenting as homeless during the month:	9 (10)	No Target Set	Low is Good	



What is working well?	What are we worried about?	What do we need to do?

Permanence – Destination upon Leaving Care

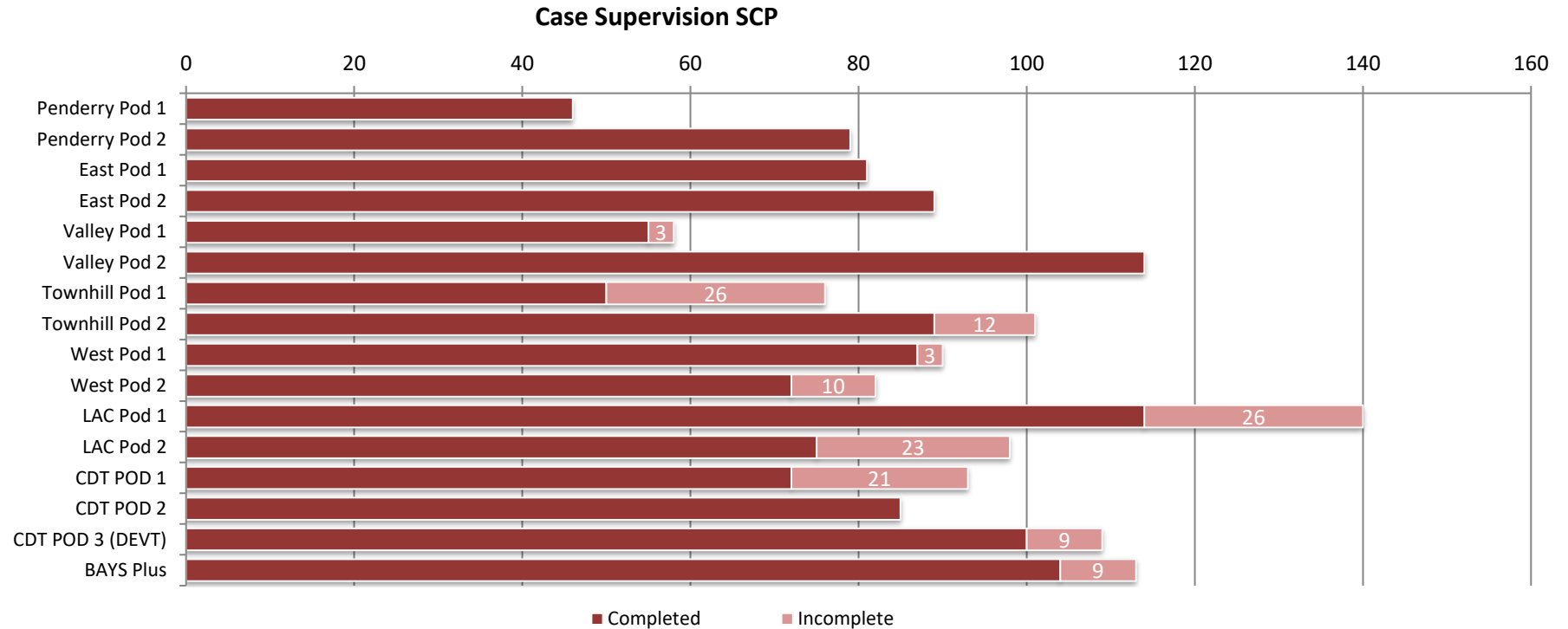
Measure / Metric	Result	Target	What's Good?	Status
The percentage of children supported to live at home at the end of the month:	1002, 64.35% <i>(991, 64.35%)</i>	75%	High is Good	
The percentage of children returning home from care during the month:	4, 33.33% <i>(5, 45.45%)</i>	55%	High is Good	



What is working well?	What are we worried about?	What do we need to do?

Quality – Case and Personal Supervision

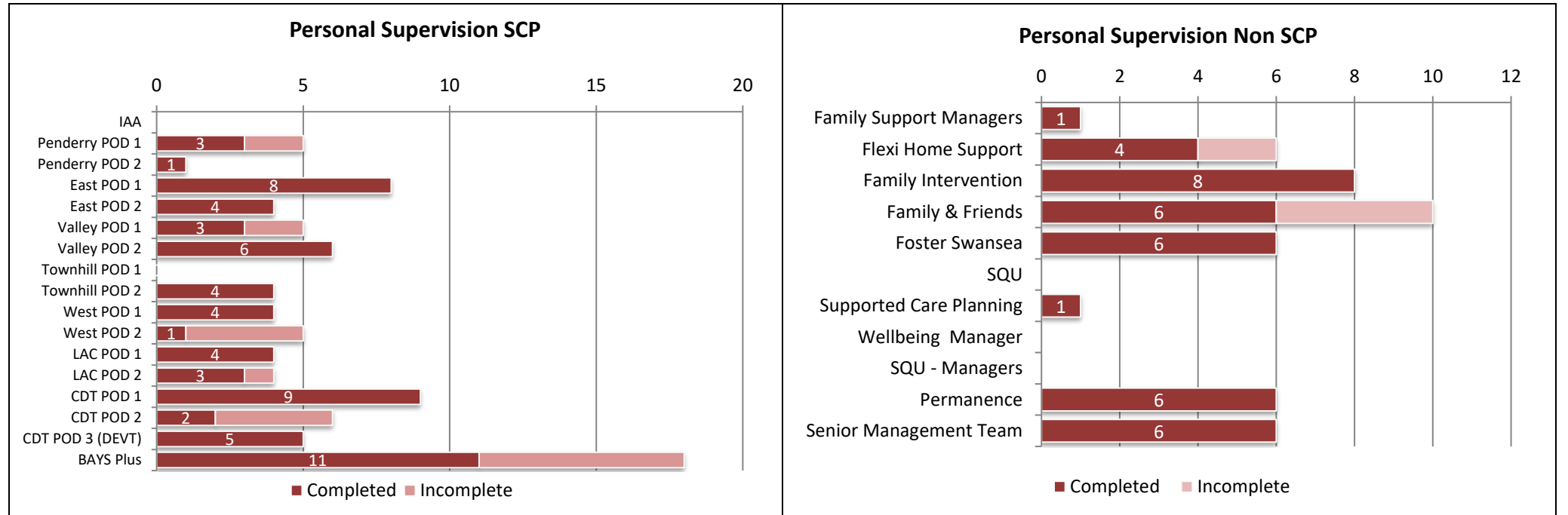
Measure / Metric	Result	Target	What's Good?	Status
The percentage of children in need of Care and Support whose cases were reviewed during the month:	1312, 90.23% <i>(1319, 90.84%)</i>	90%		



What is working well?	What are we worried about?	What do we need to do?

Quality – Case and Personal Supervision

Measure / Metric	Result	Target	What's Good?	Status
The percentage of Personal Supervision sessions that took place within prescribed timescales	106, 80.30% (115, 70.99%)	90%		



What is working well?	What are we worried about?	What do we need to do?

Quality – Signs of Safety Metrics

Measure / Metric	Result	Target	What's Good?	Status
Of the assessments completed during the month, the percentage that have Direct Work attached:	18, 26.87% <i>(22, 30.56%)</i>		High is Good	
Of the Initial Conferences held during the month, the percentage where there is evidence that a Family Network Meeting has taken place:	5, 17.86% <i>(11, 57.89%)</i>		High is Good	
Of the Conferences held during the month, the percentage where there is evidence of a child friendly explanation of the Safety Plan:	22, 32.84% <i>(31, 47.69%)</i>		High is Good	
The percentage of Words and Pictures completed within 5 working days of a child becoming Looked After due in the month:	4, 33.33% <i>(0, 0.00%)</i>		High is Good	
Of the Initial LAC Reviews held during the month, the percentage where there is evidence that a Family Network Meeting has taken place:	2, 11.11% <i>(0, 0.00%)</i>		High is Good	

What is working well?	What are we worried about?	What do we need to do?

Notes